

## System Components

### Properties

- Register Boot\* produced specifically for air handling systems, for fast and flexible installation in walls and ceilings
- multifunktionale and modular design ensures time savings for the installation in-situ concrete or filigree ceilings, wooden stand, etc.
- fast and functional processing without special tools Spezialwerkzeug
- light weight, high stiffness
- based on environmentally friendly material (HDPE) and use of hygienic, safe new material odorless
- by anti-static nature of minimal dust deposits
- tested - no measurable concentration of pollutants in the air
- hygienic conditions, according to german VDI 6022

Special attachments to the basic element for:

- direct installation in the floor, concrete floor, suspended ceilings, wood-frame wall and ceiling
- with covers to prevent ingress of dirt during construction.
- Air-tightness after DIN EN 1610 for the use of special seals on the tubing connections
- Reducing the use of various flex-tube diameter

\* **Utility model protection**

### Components

- Body: basic element with valve port NW 125 and 2 connections for flex pipe DN 75, Multi-functional installation possible by:
- Boot Extender short: the fitting is for concreted in-situ concrete or filigree ceilings. NW 125 / 135 caps optional. Labeling for valve side or Register side of the base element.
- Boot Extender long: The insert is for renovation, refurbishment, installation in the floor, on rough concrete ceilings and / or wall area. NW 125, L = 200mm. Labeling for valve side or register side of the base element. Recommendation for the outside diameter of the core hole NW 160 mm
- Reducer: The reducer for INNO-Flex duct NW 75 to NW 63, grooves for holding the O-ring, as a support cone on the duct side. Also suitable for use in false ceilings and wall stand.

### Connections

- quick and easy installation with click connectors
- airtight by the use of O-rings
- short installation time
- safe installation, as it is completely avoided by the use of HDPE material sparks

### Assembly

In the manufacture of filigree ceiling, the short installation parts are cast already. By the caps pollution is avoided completely.



## System Components

### Installation instructions

The connection of the flex duct to the register boot is easily made with an O-ring and pushing the duct to the build in marking with a 'click'. The O-ring guaranties an airtight seal, but for additional air tightness protection we recommend an additional adhesive or cold shrink tape.

In wood construction, the register boot is installed directly and fits easily within a 2/6 wall. Extenders are made for deeper installation of the register boots like concrete floors.

In concrete floor application, make sure the register boot is held in place with strapping securely to uphold the purring of the concrete. In wood construction, strapping, screwing with rubber seals or other airtight fastening can be used.

Permanent caps are used to cap unused duct opening. Temporary caps are used to cap the grill openings during construction.

### Mounting of grill

The grill snaps into the register boot. Screws are used to hold the grill in place.

### Reduction

- It is possible, the basic element to complement the multifunctional use, with a reduction.

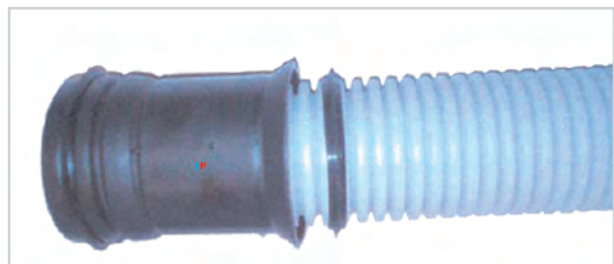
This allows the tube diameter handle NW 63/52.

The seal and connection is made by means of a O-ring.

- On Reducing an expansion is appropriate. This simplifies the insertion of the flexible tube while preventing a tilting of the reduced cable in the base element.

**Note:** Different tube dimensions should not be mixed.

**Note:** The multi-functional connector with accessories is protected in its type, design and functionality of a utility model.



### Ordering information

**Register Boot NW 125 and 2 connections, NW 75, with 1 cap**  
L x W x H = 250 x 195 x 84mm, 25mm socket

**Boot Extension short NW 125**  
L ~ 78mm, D<sup>1</sup> inside 125mm - D<sup>2</sup> outside 155 mm

**Boot Extension long NW 125**  
L - 200mm, D<sup>1</sup> inside 125mm - D<sup>2</sup> outside 155 mm

**Cap NW 125 grill side** D<sup>1</sup> inside 125mm  
**Cap NW 135 connection side** D<sup>1</sup> inside 135 mm

**Reducing 75/63, L - 117 mm**



AST 75 / 125 Art.-Nr. 2.010



EBT-K 125-K Art.-Nr. 2.011



EBT-L 125-L Art.-Nr. 2.012



RK 125 - V Art.-Nr. 2.013  
RK 135 - A Art.-Nr. 2.014



RS 75/63 Art.-Nr. 2.015